



“Alpine” Lakes meet

by Leigh



February we headed to the Lake District to stay in the Bury Hostel located about 1000ft up from Ulswater and the village of Glenridding. The forecast was looking good for Saturday after several days of snow - was this too good to be true?

There was a good turnout with 28 members attending. A very nearly full hostel, indeed.

Saturday, all were up early, eager to get out, as it was clear skies. Parties ventured out - most climbing Helvellyn by one route or another: Striding Edge, Swirrel Edge or Ice climb. Some taking on a leg of the Bob Graham Round route.

My group decided to go up via Sticks Pass, which approaches the summit from the North. Climbing up, we followed and passed many folk carrying skies. The ski resort in the Lakes



Also in this issue

Obituary, Idris, page 2

Annual Dinner review, page 3

Photo Competition, page 3

Gallery, page 4

was open ! One chair lift and one drag lift on the side of Raise... There were a surprisingly a large number of skiers.

The weather was glorious, and I have to say it was probably my best winter day I've had in the lakes for years (and that is a lot of years!). Heading on up through the snow, the views were extensive all round - from High Street, Scafels and north to Skiddaw. It was just like an Alpine day with the snow shimmering in the sun. There was the usual crowd of people at the summit - so one had to grab for a seat on the shelter to enjoy lunch...

Dear HMC'ers

Its been a busy Winter and Spring. This year we have had some rare great winter walking and climbing conditions, with many members taking advantage of the Big Freeze. So far, meets have been well attended, and summer coming means more camping meets to look forward to.

With the lighter evenings we have the return of the Thursday evening walks. Eddie is coordinating these, so watch for emails advising when and where.

Just a quick update: The AGM back in February highlighted a few issues and concerns from many of you, the main issue being our pub venue. Sixty-two of you completed the survey, many thanks for your thoughts. As a result of the survey, the pub will likely be changing, so watch your inbox for further information.

Thank you to committee and all involved in club trips, events... keep up the good work!

I look forward to seeing you on the hills.

LadyChair

TheChairman@thehmc.co.uk



The hostel was a great location with nice amenities. After a great day on the hills, we all returned to the hostel and sat down to a great dinner (thank you Caroline for organising) with exciting stories of day.



Sunday was not such a treat. The fair weather had abandoned us and returned to the mist that we are accustomed to finding. It had snowed a little more overnight and was continuing without an end in sight. There are many stories of trips down the mile long narrow road that were a little slippery and exciting... but all returned home safely in the weather.

Next trips to the Lakes are late May bank holiday camping in Buttermere, and then Langdale Valley 1st October so put in your diary. I look forward to seeing you there!



Obituary, Idris

Albert Sillwood

We are sad to report that Idris, caretaker of the Hertfordshire Snowdonia Centre since the 1960's, died during February 2010.

Idris was in his mid 80's and had been the Herts Hut caretaker long before I joined the HMC in 1969. Idris was always keen to make sure the hut was kept clean & tidy, and pillowcases were always available.

During the 1960's. Idris played a small part in the film, Carry On Up The Khyber, which was filmed halfway up the Watkin Path, behind the Herts Hut. It appears they used the gate by the waterfall as the customs post gate. I always wondered in the 70's, why there was a caravan in the ruins just below the waterfall which was probably used as their film location base.



Idris's funeral was held in Nantmor, a small village just down the Aberglaslyn Pass from Beddgelert.

The funeral was attended by many

People from the area, including his wife, Anne, and the local Post Office lady who provided some of this information.

That night, Idris's wife, Anne, died in her sleep. She had been ill for some time.

During the March 2010 meet, while walking past Idris's house, I spoke to his next door neighbour. He found Idris collapsed by his front door at night, after dropped him off a few minutes earlier. He tried to resuscitate Idris, but Idris died in Hospital, in mid February.

The lady who lives in the house opposite the Herts hut, is acting as the temporary caretaker.

I understand Herts CC are looking for another caretaker at the moment.



2010 Photo competition



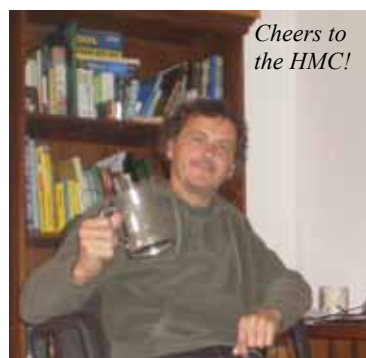
Annual Dinner meet and Member of the Year, 2010

The Annual Dinner this year was at the Snowdonia Centre - the heart of the HMC.... For those who were not there to hear some of the history, as members of the HMC we have had the use of the centre virtually since the club beginnings. As you are aware, we still have use of the facility today, even after it was taken over by Herts County Council many years ago. How many of us knew why we were the only non-educational group allowed to use the centre?



For this year's venue, Pete made the great discovery of the Cafe Gwynant - just down the road. After the usual drizzly day, it was great to have a lovely meal and party. Thanks, Pete, for organising such a great Annual Dinner.

The anticipation for Member of the Year (MOTY) also came to a close. Congratulations to Paul Dormer! For me, with the many days spent planning weekend bike rides, long distance routes, and, of course, the professional looking Crux, the choice for MOTY was clear. Although many members have made significant contributions throughout the year, Paul's dedication and attendance at the pub, where he could often be found chatting with new members, made this year's choice even clearer. Well done Paul!



Have a good year!

The HMC is running a photo competition, as announced in the last Crux, we get such wonderful photos on the website and in Crux, we would like see what are the Club favourites.

HMC Photo competition 2010 rules

- The competition is only open to current members of the HMC.
- Pictures must have been taken in the last 2 years at either at an HMC meet or involving more than one HMC member, and must have been taken by yourself.
- The photo should be of something related to the activities of the Club and can therefore include landscapes, people, action, equipment, or a social occasion.
- You have full permission to distribute the image.
- The closing date for entries is midnight September 30th 2010.
- Photo can be edited in e.g. Photoshop, but may be eliminated if in the Organisers opinion they have been over manipulated or incorporate non-original image data.
- Each member can enter up to 3 photos
- The competition organiser is Paul Dormer, decisions about eligibility will be made by Him ultimately but will be with consultation of the Committee, and contact with the entrant.

How to submit your photo:

- By hand at the pub to the organiser or any committee member.
- By email: magazine@thehmc.co.uk
- Via the website: upload to the Picassa website using the instructions on page 5 and let me know by email which picture you want entered.

Judging period

After the closing date all valid entries will be grouped and available to view online at the HMC website, you then view the pictures, and simply email magazine@thehmc.co.uk with your favourites, first, second and third. You can't vote for your own photo!. The judging and voting period finishes at midnight October 31st 2010.

Prize

Later in the year the winner will be presented with a celebratory bottle, framed copy of the picture printed on archival photopaper, as well as being printed on the front of Crux.

There may also be one or two highly scored photos that we'd like to feature on future versions of the website and other item such as posters if suitable.

If you have any questions please contact Paul.



Members Photo Gallery

Crux Editor's selection

Costa Blanca, New Year 09/10, 4 pitches up!



'Redshift' sees Blue - North Chilterns mountain biking in May through the beautiful Bluebell woods

Summit of Pen y Fan, Brecon in Jan in a rare thaw for winter 2009/2010, but still cold.



Deborah & Phil (W) Winter climbing on St Sunday Crag, Lake District.

Send pics to crux@thehmc.co.uk



Noam Topping out in the Sun



Jenny Gould & Kate on Mount Doom, NZ



Snorbie, Alps 2009 [Crux Ed just thought this was a stunning photo]



Club News



The Secretary wants to know...

What does the secretary do? Well I take membership forms and payments. Keep membership details in an OpenOffice database. Quarterly I send the details and payments for new members to the BMC.

I forward on emails from the committee or club members to the rest of the club and send out club member list from time to time, take minutes at committee meetings, type them up and send them out.

It would be good to get some feedback from you. Let me know if I'm sending too many emails or too few emails as an example.

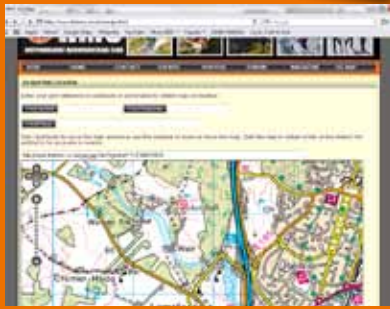
Pete TheSecretary@thehmc.co.uk

How to upload pics to thehmc.co.uk

Easy! Attach your photo to an email, complete the email subject (as this will become your caption) and send it to thehmc.co.uk.topsecret4156@picasaweb.com

Website News

HMC website now has OS Mapping, you can mark meeting locations and send links when arranging activities, visit <http://www.thehmc.co.uk/osmap.html>



Recent marriage proposal forces sales...

Alex Pender is to marry Rachel and he says hi, but may not be about much for the next year as saving for the wedding... but should make it to Bangers and Mash.

For Sale then:

- Alex is also selling 2 bicycles:
1. Icení Audaux road bike (Blue) Reynolds Steel Frame size 52cm / 21" with 14 Speed, Mudguards at £125 o.n.o.
 2. Kona Kula Lisa (Ladies) Mountain Bike (2007), Turquoise / White, 16" Easton Alloy Frame (suit 5'3" - 5'6"), Rockshox Recon Suspension Fork, Hayes 9 Disc Brakes, Raceface Cranks, Mostly Shimano LX (27spd), Very Good Condition at £400 o.n.o. Contact Alex on alex_pender@btinternet.com

Thursday evening Walks

There are more Summer Thursday evening walks planned, so why not get out for a couple of hours with friends and have a pint afterwards:

See the details online under the forum subject "Thursday summer evening walks 2010"

BMC grant update

The BM grant of £300 has been used to subsidise Alpine skills course at this Summers Gran Paradiso Alps meet.



Lands End to John O'Groats *direct*

Starting June 30th Paul Dormer will be cyclocross/touring Lands End to John O'Groats unsupported via the shortest most direct route possible, (without swimming), but including the odd bridleway!



WHERE ADVENTURES BEGIN



Patagonia Pro Shop
Scarpa
Berghaus
The North Face
Salomon
Mountain Hardwear
Black Diamond
Oakley
Columbia
MSR
Icebreaker
Royal Robbins
Superfeet
Osprey
Deuter

Come and see what's new from the world's top performance brands

118/120 High Street, Stevenage, Herts, SG1 3DW
Freephone: 0800 353 086
Telephone: 01438 353 086

www.countryside.co.uk



HMC Events

For Events listed here, more information is usually available on the Events page of the HMC website.



ILKLEY, WEST YORKSHIRE (Fri 18 Jun 2010 To Sun 20 Jun 2010)

The famous Wharfe valley, fine views of Ilkley and the surrounding countryside. Well frequented by hoards of tourists, dog walkers but to the rock climber it offers a more challenging experience! Whether you are the beginner, boulderer looking for problems of the highest quality or the bold traditionalist, some of the most challenging and striking lines to be found anywhere on gritstone.

Camping at Yorkshire Clarion campsite

Cost £7 per night per 2-person tent

Contact: Jon Moulding

Link: <http://www.ukclimbing.com/articles/page.php?id=1486>

PHASELS WOOD FAMILY CAMP (Sat 26 Jun 2010 To Sun 27 Jun 2010)

Open to your friends & family - A fun camp in Hertfordshire, climbing from 5pm Saturday, BBQ & social evening, dust off your camping gear. Climbing also available Sunday morning. Other chargeable activities are also available for kids. Arrive anytime PM Saturday.

Contact: Paul Dormer

Cost: £5 pppn camping, £5 unlimited climbing

Link: <http://www.phaselswood.org.uk/>

SUMMER ALPS - GRAN PARADISO, ITALY (Sat 3 Jul 2010 To Sun 18 Jul 2010)

Camping in Pont in Gran Paradiso National Park. High mountains, from the 800 meters of the bottom of the valleys to the 4,061 meters of the Gran Paradiso peak.

Contact: Gary Bebb

Link: <http://www.parks.it/parco.nazionale.granparadiso/Eindex.html>

BRECON BEACON CAMPING MEET, MYNYDD LLANGORSE (Fri 16 Jul 2010 To Sun 18 Jul 2010)

Camping at Llangorse Outdoor Activity Centre. Aside from the usual walking, biking and climbing there are other outdoor pursuits /entertainments to be had, check out the website link and go to their 'homepage' for more details (book in advance). 12 Tent pitches booked thus far (Approx. 15 to 20 Persons)

Contact: Barry McRobb

Cost: £4:50 p.p.p.n

Link: <http://www.activityuk.com/accommodation/camping.aspx>

CORNWALL, AUGUST B.H CAMPING MEET (Fri 27 Aug 2010 To Mon 30 Aug 2010)

Camping at the wonderfully fantastic Trevaylor caravan and camping , close to St Just, Penzance, Lands End and St Ives, West Cornwall.. <http://www.landsendarea.co.uk/19/areamap.htm>

many many many things to do and see around the coast and inland. I've booked 8 camping pitches should be space for around 10 to 20 people based on sharing tents etc.

Contact: Barry McRobb

Cost: £3.00 p.p.p.n + £8.00 per tent per night

Link: <http://www.cornishcamping.co.uk/index.html>

AUG BH SNOWDONIA (Fri 27 Aug 2010 To Mon 30 Aug 2010)

TBC

Contact: Outdoor Meets Rep

CHEDDAR MEET, Y.H.A CHEDDAR, SOMERSET (Fri 17 Sep 2010 To Sun 19 Sep 2010)

Staying at the Y.H.A in cheddar village, situated in the village of Cheddar and only minutes away from the famous cheddar gorge and caves. Plenty of climbing, cycling and walking opportunities, and

Contact: Barry McRobb

Cost: £13.95 Per person per night.

Link: <http://www.yha.org.uk/find-accommodation/south-west-england/hostels/cheddar/index.aspx>

MTB: EPIC 100 MILES OFF ROAD, TRANS CAMBRIAN WAY, MID WALES (Thu 23 Sep 2010 To Mon 27 Sep 2010)

The annual multi day off road bike ride. . Cycle the Trans Cambrian Way, 100 miles over 3 days, across Mid Wales from the English border to the coast.

Contact: Paul Dormer

LAKE DISTRICT, LANGDALE VALLEY (Fri 1 Oct 2010 To Sun 3 Oct 2010)

Robertson Lamb Hut in Great Langdale Valley. Sleeps 24, showers, hot water, flush toilets, gas and electric cooking, cutlery, crockery, fridge, drying room. Open Fire. Fantastic location for access to all the Langdale round peaks. choice of old or new Dungeon Ghyll Hotels for local pub.

Contact: Leigh Hulse

Phone: 07766 524219

Cost: £16

BANGERS AND MASH SNOWDONIA NORTH WALES (Fri 5 Nov 2010 To Sun 7 Nov 2010)

Legendary Bangers & Mash meet, Herts Snowdonia Centre, NNth. Wales, 34 places. Fireworks and dinner, cooked and served up to you by the committee! Possible extra places in Bryn Dinas bunkhouse, but make your own arrangements. Campsite at nearby Williams Farm (1/2 mile past the centre) or local YHA (if open).

Contact: Paul Dormer

Cost: £28 including food

Link: <http://www.hertsdirect.org/yn-gpeople/info/leisure/hertssnow>

PEAK DISTRICT - XMAS DINNER WEEKEND, NR BUXTON (Fri 10 Dec 2010 To Sun 12 Dec 2010)

High Ash Farm. Near Buxton. Close to Roaches 3.5miles, Ludds church 3.5miles, Mountain Biking & Ilam, Dovedale aprox 10miles.

Accommodation is in two buildings, each individual rooms is en suite. Dinner is on site at the hostel. Breakfast is provided as optional.

Contact: Leigh Hulse

Phone: 07766 524219

Cost: £35 or £45

LAKE DISTRICT, HIGH HOUSE, BORROWDALE VALLEY (Fri 28 Jan 2011 To Sun 30 Jan 2011)

High House is restored / converted 16/17th century farmhouse, situated near the hamlet of Seathwaite, Borrowdale Valley. Sleeps 25 in two dorms

Contact: Leigh Hulse

Cost: £12 for weekend

LAKE DISTRICT, TORVER (Fri 29 Jul 2011 To Sun 31 Jul 2011)

Lancashire Caving Club Hut in Torver, nr Coniston, SD 281957. Good kitchen and common room.

Sleeps 26. Showers, drying room. 800m walk from car park and a short walk along the Walnar Scar Rd, gives access to Dow Craggs, Coniston Old Man.

Contact: Leigh Hulse

Cost: £12 for weekend

LAKE DISTRICT, STAIR, NEWLANDS VALLEY (Fri 9 Sep 2011 To Sun 11 Sep 2011)

Stair Cottage, situated in the Newlands Valley near Keswick was built by the Fylde MC in 1969. The hut has accommodation for up to 21 people (dorms of 6, 7 and 8) and ample parking.

Contact: Leigh Hulse

Cost: £12 for weekend

Why buy Páramo?

- 1. The professional touch**
Rescue teams and outdoor instructors were Páramo's earliest converts and remain the focus of development. More than 30 mountain rescue teams routinely choose Páramo.
- 2. Designs born 'on the hill'**
Páramo's designs work because they are created by people who understand what it's like in the great outdoors. Months spent trialling garments for comfort and functionality result in intelligent ventilation, pockets sited for maximum convenience and hoods that move with you.
- 3. Whatever the weather**
Innovative Nikwax fabrics actively push water away from the body, making our garments better than 'breathable', more comfortable than 'hard shell' and as crunch-free as 'soft shell'.
- 4. Handled with care**
Páramo isn't just about comfort but ethical production too. Our manufacturing facility in Colombia is a valuable social programme with the Miquelina Foundation, providing employment and skills to 'at risk' women, and funding practical help such as housing, childcare and a canteen.
- 5. Built to last**
With Páramo comes a lifetime guarantee. With no membranes to break down in our waterproofs, your jacket or trousers won't pack up after a couple of seasons. Waterproof performance can be renewed indefinitely with straightforward Nikwax aftercare.

SHOP ONLINE @ COMPLETEOUTDOORS.CO.UK

VISIT OUR STORES @

Complete Outdoors London Road Bourne End Hertfordshire HP1 2RS 01442 873133		Complete Outdoors 20 Buckingham Street Aylesbury Buckinghamshire HP20 2LH 01296 420163
--	--	---